



### **Easy Bin Pick-up**

16 roller fork includes 14 chain-driven rubber rollers plus 2 additional front idler rollers to better assist in picking up bins.

### **4-Wheel Independent Steering**

Four Poclain MG-05 radial piston hydraulic motors provide maximum durability and performance with minimal maintenance.

### **Rigid Frame**

All main frame members are comprised of structural grade 1/4" wall tubing.

### **Power Without Compromise**

Equipped with a 125 HP John Deere Final Tier 4 engine to meet and exceed all power requirements.

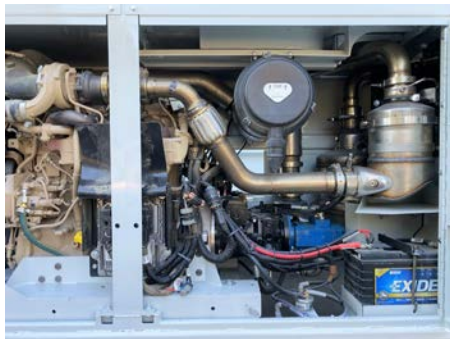
### **Heavy Duty Suspension**

6 and 8 element leaf springs, on right and left respectively, coupled with heavy duty shocks increase load capacity while maintaining smooth ride quality.

### **More Than Just Bins**

Use your bin carrier to tow trailers with the included 2" standard trailer hitch to increase its usefulness in moving operations.

# WSE WB-1000 BIN CARRIER



## STANDARD FEATURES

- John Deere 4045HFC04 Final Tier 4 Engine
  - 125 HP @2200 RPM
  - 396 lb-ft @ 1500 RPM
- Large custom radiator, oil cooler, & charge air cooler package
- Front & rear independent steering
- Four Poclain MG-05 high-pressure direct-drive radial piston hydraulic motors
- 2-Speed ground drive system
- 33 x 15.5 14-ply turf tires
- Four wheel parking brakes
- 16 (14+2) roller front fork
- 6 & 8 leaf spring suspension
- Protected cab with seat suspension
- Removable rear bin guard rail
- 2" standard tow hitch
- LED lights
- Joystick control

## DIMENSIONS

- Overall Length:** 29' 2.9" (8.91m)
- Overall Width:** 8' 8.6" (2.66m)
- Overall Height:** 5' 2.2" (1.58m)
- Wheel Base:** 11' 4" (3.45m)
- Track:** 7' 3.1" (2.21m)
- Fork Width:** 2' 11.5" (0.90m)
- Bin Guard Width:** 4' 1.5" (1.26m)
- Bin Storage Length:** 28' 11" (8.81m)
- Diesel tank capacity:** 46 Gal (174L)
- Hydraulic tank capacity:** 43 Gal (162L)
- DEF tank capacity:** 9 Gal (34L)

## OPTIONAL FEATURES

- Automatic reversing engine fan
- Rear bin gate
- Auto centering rear axle
- Aggressive tread directional skid steer tires



### Westside Equipment Madera

2500 W Industrial Avenue  
Madera, CA 93637  
Phone: (559) 577-1800  
Fax: (559) 661-4694

### Westside Equipment Crows Landing

18 Fink Road  
Crows Landing, CA 95313  
Phone: (209) 856-4700  
Fax: (209) 837-4796

### Westside Equipment Woodland

1230 Churchill Downs  
Woodland, CA 95776  
Phone: (530) 298-5035  
Fax: (530) 666-3100

### Westside Equipment Five Points

20289 W Oakland  
Five Points, CA 93624  
Phone: (559) 217-0094

